

Apex Cirrus Marble Suite

48" AND 54" OPTIONS Installation Instructions

**All instructions must be handed to
user for safekeeping**

This is not a DIY product
Edition A 02/16

**Please ensure you read both the Fire and the Suite
instructions before starting the installation.**

These Notes Must Be Read Before Installation

All instructions must be read carefully before work commences this is a guide and all items should be checked to ensure they are compatible when assembled.

The gas fire to be used with this suite must be fitted and commissioned prior to final fixing of the marble is carried out.

All goods must be checked prior to installation should there be any damaged goods or missing items then the suite or fire should **not** be fitted unless they can be exchanged retrospectively without home visits by the company, any damaged goods fitted then become the responsibility of the end user or installer to rectify and not that of the company.

The appliance must be installed by a competent person in accordance with the Gas Safety (Installation and Use) Regulations 1998.

A Gas Safety Registered installer must be used for this purpose.

Read all these instructions before any installation takes place and in conjunction with the appliance on site.

This appliance must be installed in accordance with the rules in force and only used in a sufficiently ventilated space.

This appliance is factory set and tested for operation on the gas type, and at the pressure stated on the appliance data plate.

After a new gas appliance (excluding flueless cookers) has been fitted, the Building Regulations in England and Wales require that the installation must be notified to your Local Authority. Your Gas safe registered engineer needs to do this, failure to register the appliance may affect your warranty.

Installation of the Suite

The fireplace opening should be inspected and repairs made where necessary.

A chair brick or fireback should be removed.

This appliance requires a natural draught flue system which may be one of the following;

225mm x 225mm (9in x 9in) brick or stone

125mm (5in) minimum diameter lined brick or stone.

125mm (5in) minimum diameter twin wall flue conforming to BS 715.

Please remember that faults such as cracking may be caused by poorly built and restrictive flues and therefore is not the responsibility of the manufacture of this appliance.

Any existing draught device situated under the fireplace must be sealed off.

The opening area must be non-combustible

The area immediately above the outlet must form a smooth path into the flue.

If a flue liner is to be used the fireplace opening will be required to have a sealing plate fitted (horizontal register plate) and sealed at the base of the flue with the liner fixed and sealed within it.

Ensure the appliance does not restrict the flow to the flue and a space of no less than 50mm is required from the top of the appliance prior to the gather of the flue area.

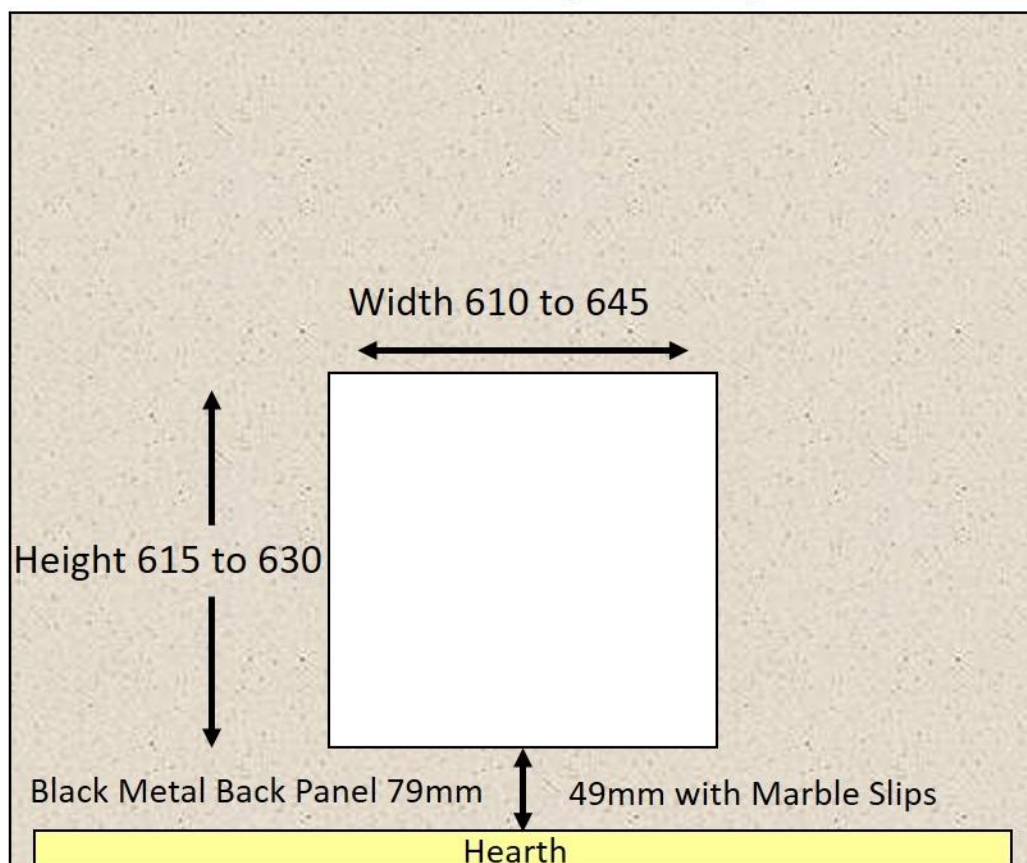
The fireplace or builders open must be reduced to suite the appliance both side to side and the full depth of the appliance, please see below.



Bed the hearth on to a standard mortar base and this may be advisable to leave to set level depending on the amount of mortar used to ensure the hearth is a level surface for the suite to be set upon.



Once the hearth is established the opening will need to be created to the following measurements to allow for either the metal back panel or marble slip option.

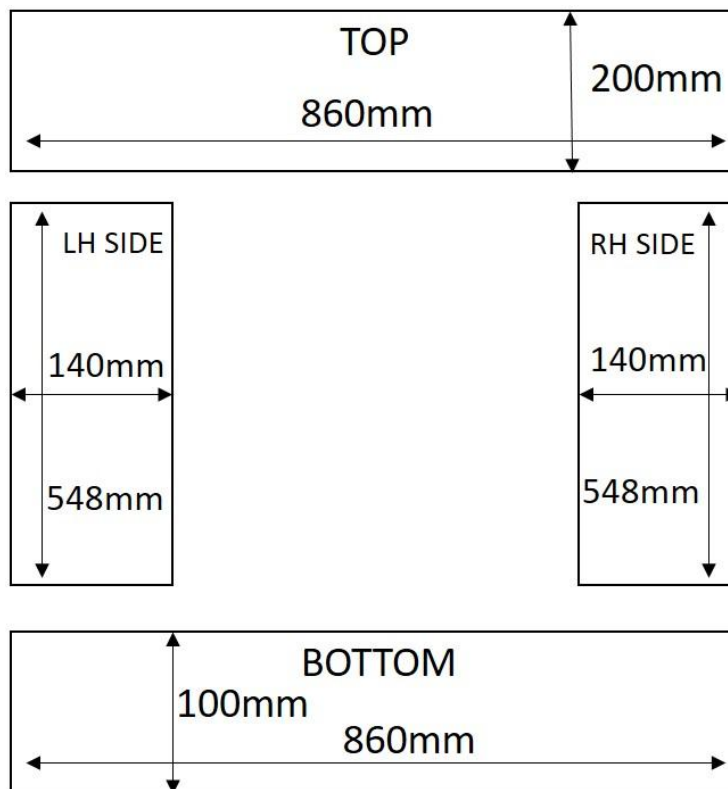


At this point the fire should now be fitted if the frameless kit has already been fitted you will not need to adjust the isolation valve position please read both the fire and frame instructions carefully before installation.

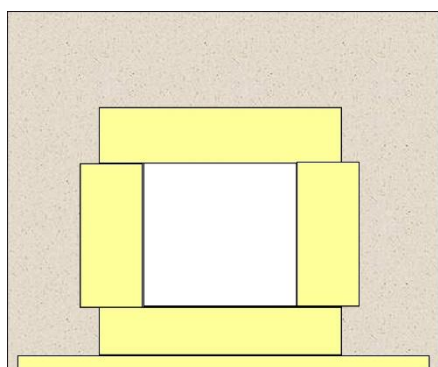
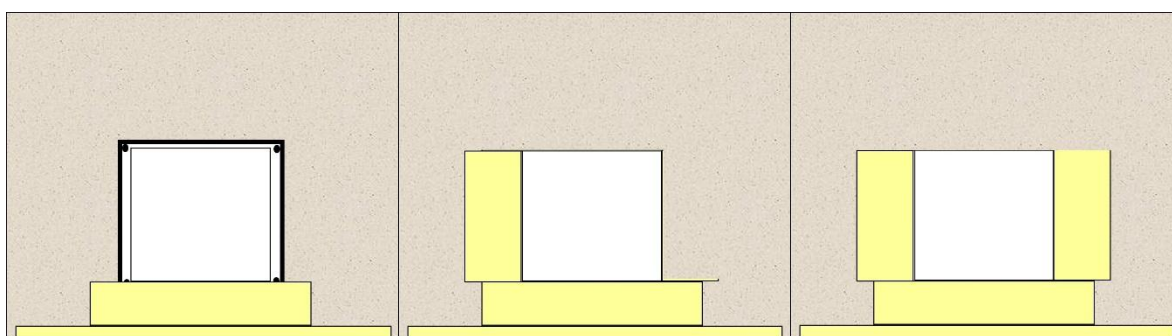
The gas fire should be installed and fully commissioned before commencing with any further marble installation in case the firebox needs to be removed.

Once the fire is complete the Black metal back panel option can be fitted please see separate instructions with the panel.

Or the marble slips can be attached using Gripfill adhesive or an alternative such as tile adhesive bonding plaster or heat proof silicone it is advisable at this stage that a dry run is made at each section to ensure the measurements are correct and that the uprights are not too far apart etc.

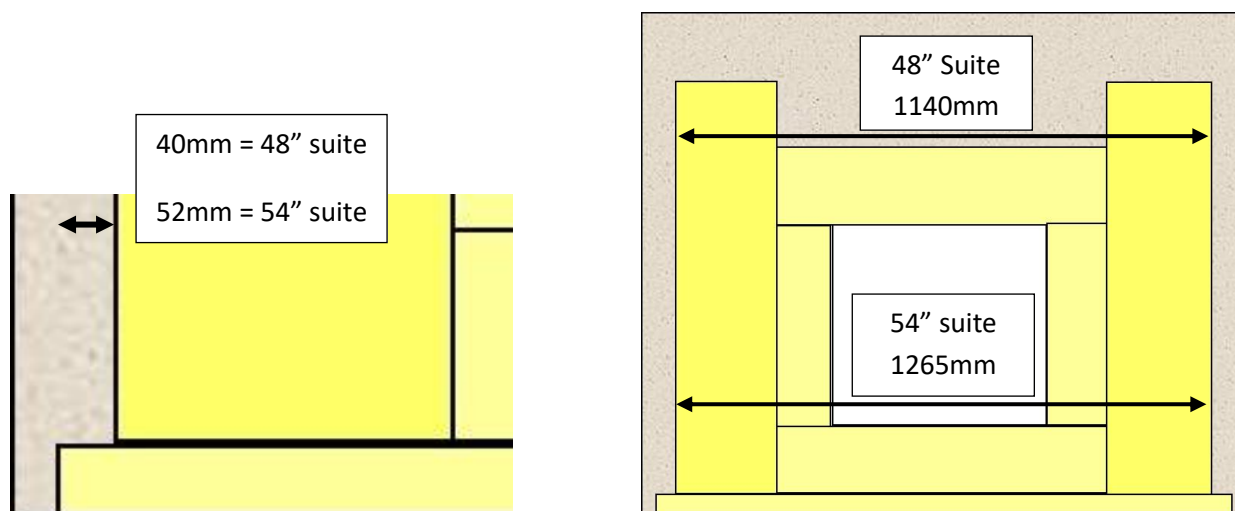


Start with placing the bottom section in place centralising with the fire which should be central to the hearth followed by the sides and the top all placed in position tight against the fire's frame work.



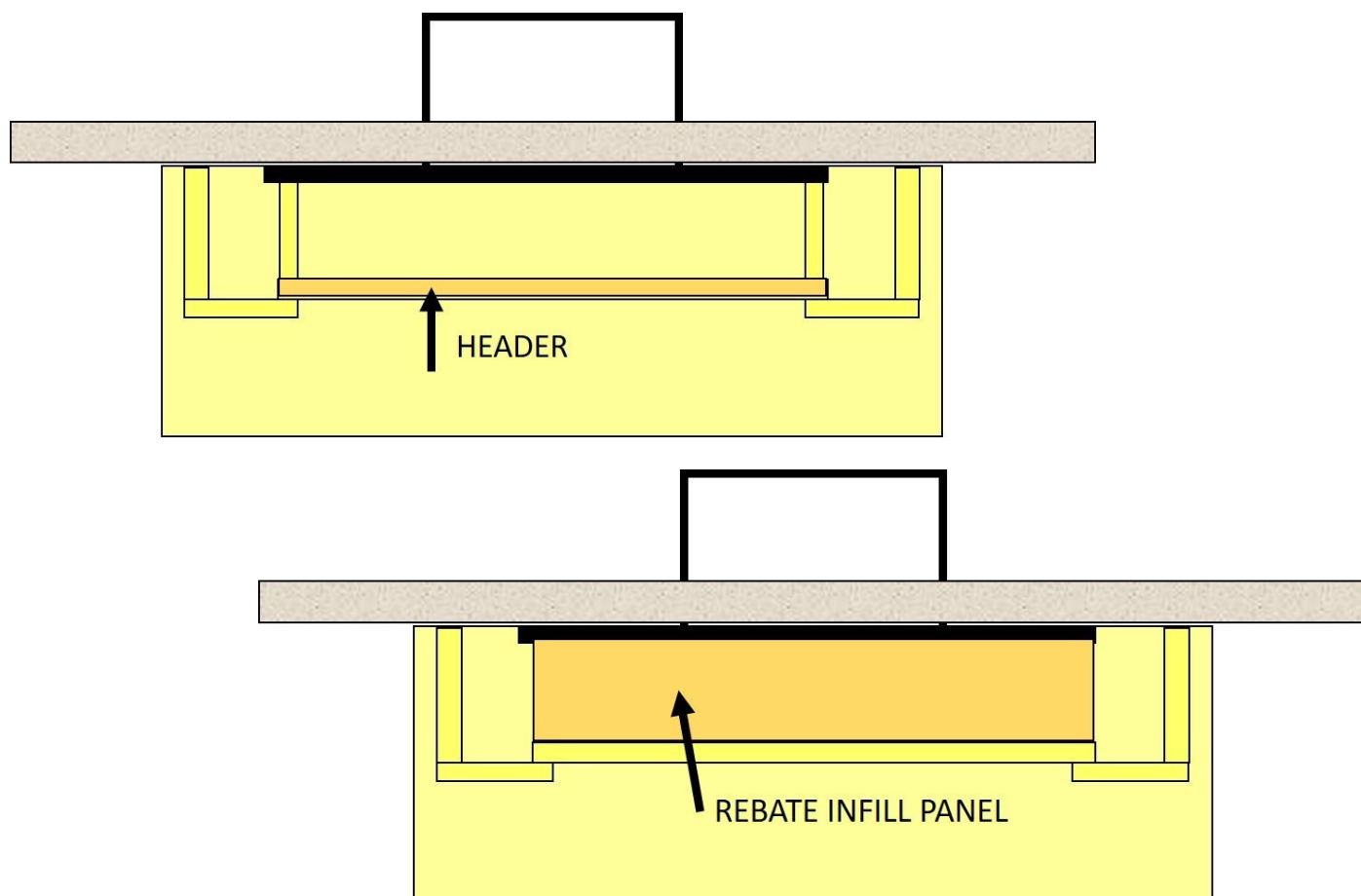
Make sure the panel is flat to the wall and grout any small gaps if required with suitable product such as a tile grout or tile adhesive.

You can now fit the uprights into position ensuring the space on either side of the uprights is equal this should be 40mm each side on the 1220mm (48") Suite and 52mm each side of the 1370mm (54") suite, also ensure these are upright by using a spirit level.



Fix the uprights into position by marking and screwing the upright through the bracket attached, placing small amount of adhesive on the back edge of the upright.

The header and rebate top fill can be now placed into position the header section slides down and is placed behind the two uprights and held in with adhesive as below.



The rebate panel can also be placed into position and attached with small amounts of adhesive.

The mantel shelf can now be positioned centrally to the suite and final grouting can take place once the adhesive had hardened taking care not to use metal scrapers or tools on the marble as this can scratch the surface

