



## FITTING GUIDELINES

Harvington 54" & Wychbury 54"  
Limestone Fireplace

**PLEASE READ CAREFULLY BEFORE  
INSTALLATION**

**THESE GUIDELINES MUST BE LEFT  
WITH THE HOUSEHOLDER  
AND RETAINED FOR FUTURE REFERENCE**

## **CUSTOMER INFORMATION SAFETY AND CARE SHEET**

**PLEASE KEEP FOR ANY FUTURE REFERENCE AND TO BE GIVEN TO ANY NEW HOUSEHOLDER.**

### **Fireplace installation and servicing**

- 1) All fireplaces must be installed by a qualified, competent and experienced installer complying to building regulations, British Standards and any rules in force.
- 2) Any down lights supplied with a fireplace must be installed by a qualified and approved electrician.
- 3) Servicing of down lights must be by a qualified and approved electrician.

### **Fireplace Safety**

- 1) Only use your fireplace for the use it was intended.
- 2) Do not walk, climb, swing or sit onto the fireplace, or place any load to any fireplace part.
- 3) Do not allow children to play on the fireplace as this can be very dangerous. It is advised to use a full fire guard that is anchored to the wall that protects the complete fireplace whenever there are children in the room of installed fireplace.
- 4) Never place heavy objects onto the top of shelf, only light ornaments should be used and to be placed towards the rear edge of shelf.
- 5) Always use approved fire guards with any fires that have naked flames or are heat producing. It is a regulation that you must use an approved fire guard with children, the elderly and the infirm.
- 6) Never allow combustible articles to encroach onto the fireplace to any part, such as carpets and curtains etc.
- 7) Never use any combustible sprays, liquids, stone sealer's, or any other combustible product near to the fireplace when there are naked flames or any heat from your fireplace appliance.

### **Fireplace Care**

- 1) It is advised that limestone fireplaces are sealed with an appropriate stone or marble sealer after installation, but only when the fireplace is completely clean, cool and dry. Contact your fireplace retailer for further advice.
- 2) Once the fireplace is sealed, there should only be the need for dusting. Dust with a soft colour fast cloth. Do not use any polish on limestone fireplaces.
- 3) Avoid dropping anything onto the fireplace as this will cause damage.
- 4) Avoid vacuum cleaners coming into hard contact with any part of the fireplace.
- 5) Avoid spillages onto the fireplace, if in the unfortunate event that a spillage occurs, soak up the spillage immediately with a soft colour fast cloth or sponge and then clean with a damp colour fast cloth. If there is any stain after the fireplace has dried, please contact your fireplace retailer for advice as some spillages can be acidic that can penetrate to the stone despite the use of stone sealer.
- 6) Ensure the fireplace is adequately protected when decorating as decorating materials can damage and stain the fireplace.

## FITTING GUIDELINES

These guidelines to be left with householder and subsequently passed on to any new householder.

### Important

- Please read all of these guidelines and diagrams before commencing any installation.
- This fireplace **MUST** be installed by an experienced, suitably qualified, and competent fitter.
- The fireplace installation is **NOT** recommended as a DIY or single person installation.
- The fireplace installation **MUST** be in accordance with Building Regulations, British Standards and any Rules in Force. Current Document J outlines various British Standards that cover all aspects of fireplace installation for England and Wales. The fixing of stonework is covered by BS 8298 "Code of practice for Design and Installation of Natural Stone Cladding and Lining.
- Make reference to the Stone Federation of Great Britain, guidance on fire surrounds. ([www.stonefed.org.uk](http://www.stonefed.org.uk))
- Reference must be made to all Building Regulations and any Rules In Force for areas outside of the UK such as Scotland and Southern Ireland.
- Should any conflict occur between these guidelines and any applicable regulations and any rules in force then the Regulations and Rules in Force shall apply.
- The fireplace installation **MUST** be in accordance with planning permission and local building control.
- Any solid fuel appliance installation completed in conjunction with this fireplace should be installed by a HETAS (GB only), registered installer or approved by your local building control officer.
- Any electrical connections made whilst fitting this fireplace should meet the requirements of Building regulations and any Rules in Force. The recognised independent body for electric is the National Inspection Council for Electrical Installation Contracting (NICEIC).
- Any gas appliance installation completed in conjunction with this fireplace must be completed by a Gas Safe registered gas engineer, in accordance with the gas fire manufacturer's instructions.
- Only install the fireplace to a solid brick chimney.
- If the fireplace cannot be permanently fixed to a solid brick chimney, such as block work, stud work, or any structure other than a solid brick chimney, then we recommend that you consult an architect or structural engineer for advice.
- All fireplace mechanical fixings must be stainless steel or at least galvanised steel and be totally corrosion and heat proof and of adequate size and strength to fix fireplace.
- The consequences of failure of a stone fireplace surround incorrectly installed and secured are extremely serious. It is essential that a fireplace surround is installed and secured to withstand foreseeable abuse such as a child pulling down on a cantilevered shelf.
- Always inform the user when the fireplace can be used for the first time taking into account of the full drying times for adhesives etc that have been used.
- Fixing brackets **MUST** be used.
- Lock wire with anchorage points **MUST** be used.
- Fixing dowels **MUST** be used when fitting shelf. The shelf and other overhanging components should be adequately restrained in all instances as they are liable to tip forward so it is imperative this is securely fixed back into the wall so there is no possibility of any piece tipping and falling.
- The fireplace **MUST** be completely adhered to the chimney brickwork with suitable adhesive. Such products should only be used for applications approved by the manufacturer. If there is any doubt, the adhesive manufacturer should be consulted.
- Gypsum based products is not recommended as an adhesive and should not be used.
- Never use adhesive alone to fit the fireplace.
- Brackets, anchorage points and dowels to be fitted against brickwork **NOT** plaster.
- All mechanical fixings to be chased into mounting wall brickwork to enable complete contact of all rear edges of fireplace to wall so a total bond can be made when also adhering fireplace to wall.

- Ensure all mechanical fixings do not obstruct total face to face contact of any fireplace mating parts.
- Use heat proof white or clear stone silicone adhesive between **ALL** mating stone pieces. (Ensure to protect fireplace visible stone surfaces from silicone over spill).
- **NEVER** drag mating stone pieces together when fixing, as this could chip and scratch the stone.
- Grouting of stone joints can be made by using white tile glue ensuring you wash of residue with clean water.
- It is recommended that after installation and when the fireplace has completely dried, that a suitable stone sealer is used to seal all visible stone surfaces.
- You **MUST** supply and fit, in correct position a data plate showing all correct information in accordance with building regulations and any rules in force.
- Ensure that purpose provided room ventilation is provided in accordance with building regulations and any rules in force.
- Ensure these fitting guidelines together with the fireplace customer care sheet are given to the customer. Subsequently these are to be passed on to any new home owner or occupier.

### **Important**

Ensure the fireplace is fixed to the chimney wall safely and securely and fitted correctly to all regulations, British Standards and any rules in force. If this cannot be achieved

**DO NOT FIT THE FIREPLACE.**

### **Safety precautions.**

- Use all necessary safety clothing, for example:
- Suitable dust masks where there is a risk of dust contamination.
- Suitable protective gloves.
- Suitable Protective foot wear.
- Suitable Protective eye goggles.
- Never wear loose clothing or jewellery.
- Ensure long or loose hair is adequately protected, so as not to be a hazard when using tools etc.
- Ensure all fitting tools and equipment to be used are in good working order and safety approved and suitable for the use intended.
- Always comply with all Health & Safety regulations.
- This fireplace has parts that are irregular in shape and above 25kg in weight, therefore installation is recommended for more than one person or suitable lifting equipment to be used.

## Fitting Guidelines. (To be used in conjunction with diagrams).

### Note:

This fireplace will require other fixing materials including:

- Suitable stainless steel screws, washers and wall plugs.
- Suitable stainless steel locking wire and anchorage points (can be suitable stainless steel screws, washers, and wall plugs).
- Suitable heat resistant stone to brickwork silicone adhesive in either white or clear finish. (The silicone adhesive must be temperature rated at least from -50 degrees Celsius to +150 degrees Celsius). For chambers the temperature rating must be from -50 degrees to + 300 degrees Celsius.
- Suitable Thixotropic two part resin chemical anchor glue suitable for stone, brickwork and metal.
- Suitable sealer for stone and brickwork.
- White dry lining wall adhesive or white cement and silver sand for bedding hearth. Always follow manufacturer's instructions for all adhesives and cements.

None of the fireplace components are sealed with stone sealer so you should seal all fixing areas before you begin. (Note: subject to adhesive manufacturer's instructions).

With suitable testing equipment check for live electrical cables or gas pipes and any other obstructions or connections that maybe obscured in the area of intended fireplace installation. If found use a suitably qualified person to remove and make safe. Remove all wall coverings and emulsion in area of intended fireplace installation. Ensure the chimney face is completely sound, dry, dust, grease and contamination free before fitting. In properties with traditionally plastered brick walls, the plaster can be cut back to enable the fireplace surround to be fixed directly to the brickwork behind. The plaster can then be made good around the fireplace surround. This is good practice as there will always be a risk of the fireplace surround becoming unstable should a failure of the plaster occur.

Permanently glue the two eyelet fixing brackets to each end of shelf using thixotropic two part resin chemical anchor fixing glue suitable for stone, metal and brickwork ensuring they are fully pushed into stone and leave to dry. Permanently glue the two dowels provided into the two holes provided to each end of the rear surface of shelf using thixotropic two part resin chemical anchor fixing glue suitable for stone, metal and brickwork and leave to dry. Ensure both dowels are glued 50% of their entire length into the stone shelf, the remainder 50% of dowel will be glued into the brickwork chimney at a later stage.

When dry, place the shelf centrally to top header and mark the position of fixing bracket eyelets and dowels to chimney wall. Remove shelf. Drill holes into chimney wall in your pre marked positions for eyelet fixings to accommodate suitable sized stainless steel wall plugs. Fit wall plugs. Drill suitably sized holes to accommodate dowel fixings. Ensure the drilled dowel holes in brickwork are totally clean and dust free with no contamination. Pass stainless steel or galvanised steel locking wire through each hole provided to each end of shelf and leave enough over length to enable fixing to chimney at next stage.

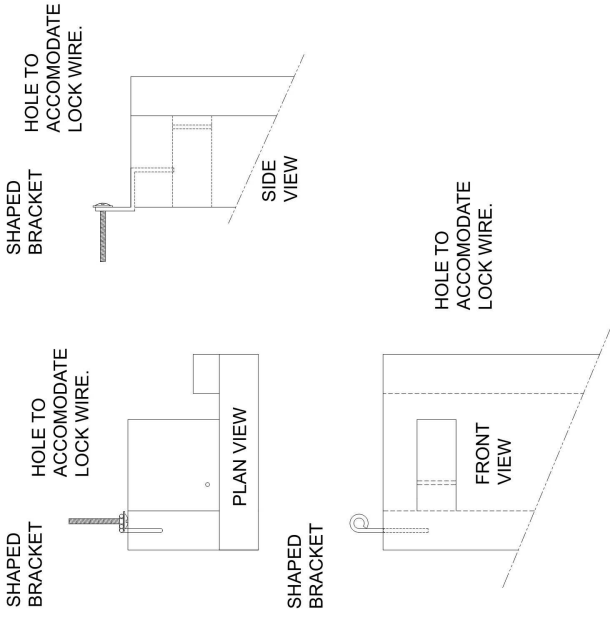
Permanently fix top shelf centrally to the top header and chimney using firstly silicone stone adhesive to bond shelf to the top header and chimney. The over length locking wires to be positioned above shelf. **Ensure a total bond** has been made to **all** mating pieces including **all** of rear shelf face to chimney. At the same stage use thixotropic two part resin chemical anchor fixing glue suitable for stone, metal and brickwork to bond shelf dowels into chimney.

**Important.** As you are using silicone stone adhesive and thixotropic resin for the dowels ensure the two adhesives do not come into contact with each other when using and fixing. Using suitable sized stainless steel screws and washers through each eyelet fixing to each end of shelf, fully tighten into stainless steel wall plugs. Drill holes into chimney wall to fit suitable sized stainless steel anchorage points in suitable position to both over length lock wire positioned above the shelf. Using stainless steel locking wire to the correct procedure fully tighten and secure to your chimney anchorage points

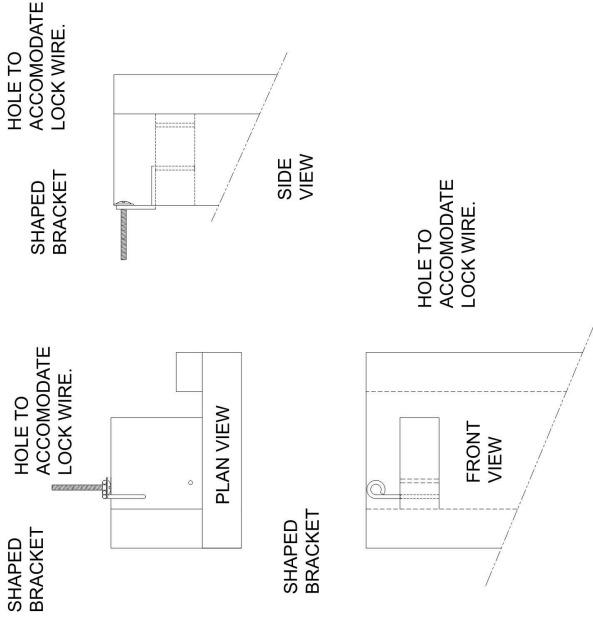
Make good the plaster to wall around fireplace surround taking extreme care and protection to ensure there is no plaster contamination to the stone fireplace. (It is advised that when the fireplace has totally dried, to seal all visible surfaces with a suitable stone sealer and let fully dry before carrying out the plaster process).

THE FIREPLACE DEPENDING ON DATE OF MANUFACTURE CAN HAVE VARYING BRACKETS AND BRACKET LOCATIONS FOR THE LEGS AND TOP HEADERS. IDENTIFY THE VERSION TO THE FIREPLACE SUPPLIED AND REFER TO DRAWINGS BELOW.

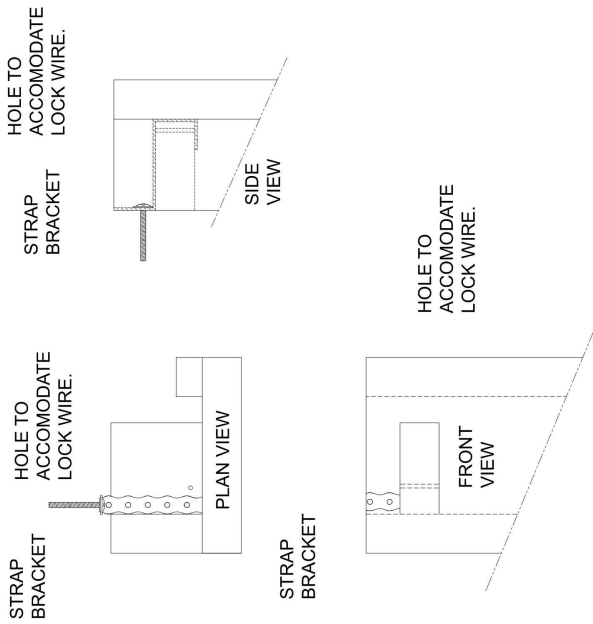
VERSION 1. SHAPED BRACKET POSITION TO LEGS AND APPLICABLE TOP HEADERS.



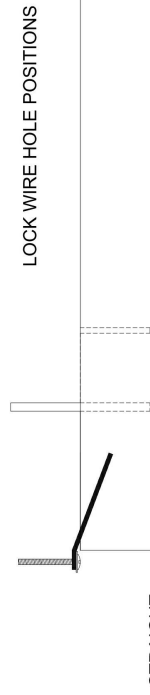
VERSION 2. SHAPED BRACKET POSITION TO LEGS AND APPLICABLE TOP HEADERS.



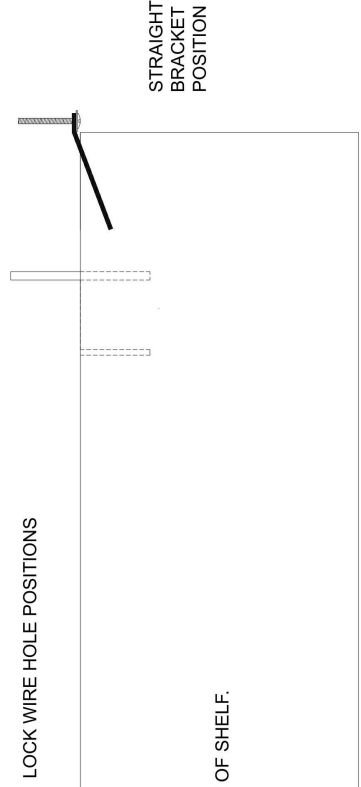
VERSION 3. STRAP BRACKET POSITION TO LEGS AND APPLICABLE TOP HEADERS.



SHELF DOWEL POSITIONS



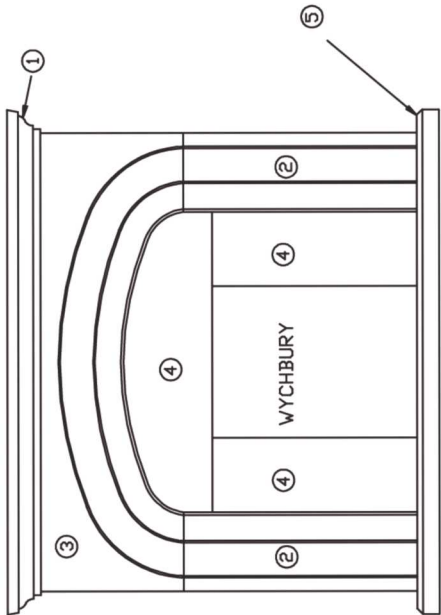
SHELF DOWEL POSITIONS



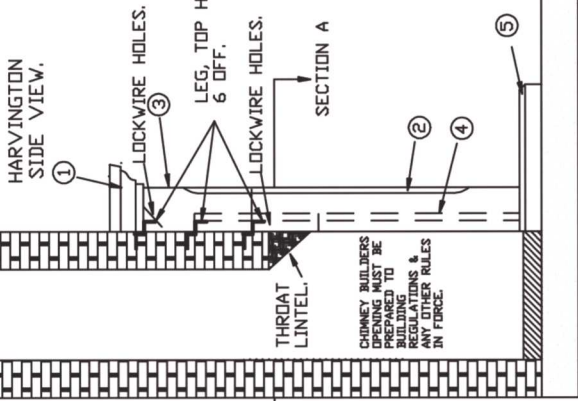
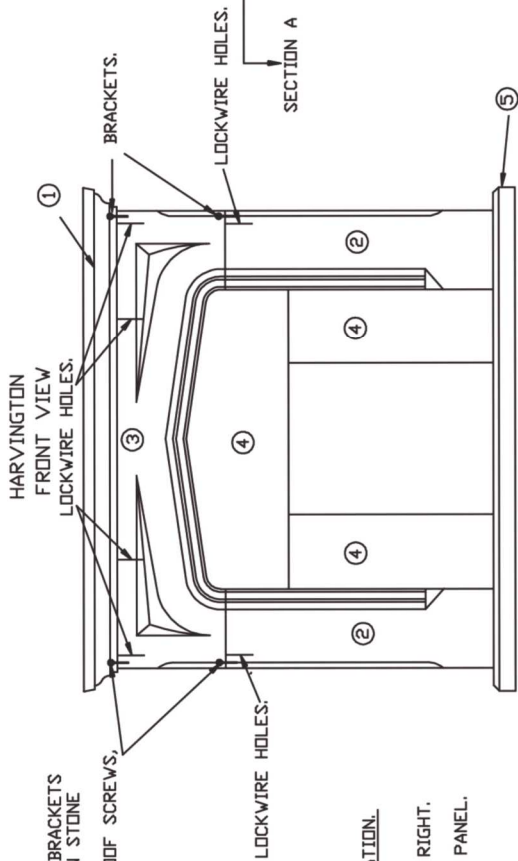
STRAIGHT BRACKET POSITION

STRAIGHT BRACKET POSITION

PLAN VIEW OF SHELF SHOWING POSITIONS OF DOWELS, BRACKETS AND LOCK WIRE HOLES TO REAR OF SHELF.  
NOTE: POSITIONS OF DOWEL AND LOCK WIRE HOLES CAN VARY.



LEG & TOP HEADER SHAPED BRACKETS  
GLUE INTO HOLES & SLOTS IN STONE  
PROVIDED.  
USE SUITABLE CORROSION PROOF SCREWS,  
WASHERS & WALL PLUGS  
TO SECURE FIRMLY TO WALL.  
SEE SIDE VIEW.



PARTS IDENTIFICATION.

- 1) SHELF.
- 2) LEGS, LEFT & RIGHT.
- 3) TOP HEADER.
- 4) 3 PIECE BACK PANEL.
- 5) HEARTH, BRACKETS X 4.

HARVINGTON  
PLAN VIEW SECTION A-A.

