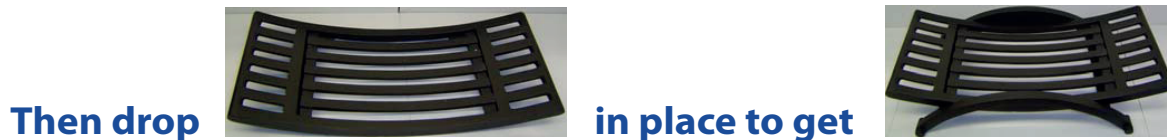


ASSEMBLY INSTRUCTIONS FOR THE NEXUS BASKET

For Solid Fuel Applications



Do this on both sides of the legs. Due to the casting process you may find that one of the plates fits one side better than the other.

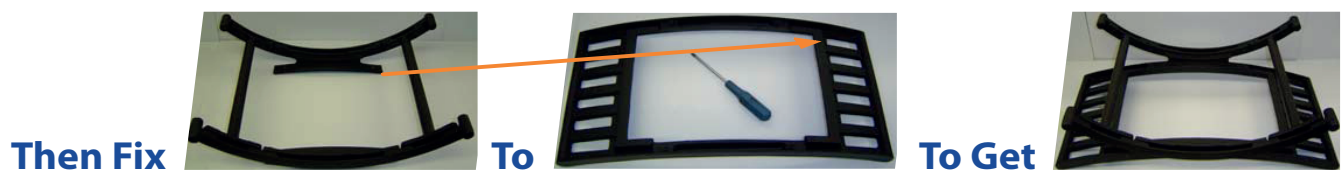


Finally locate the basket, ash pan and cover in place.

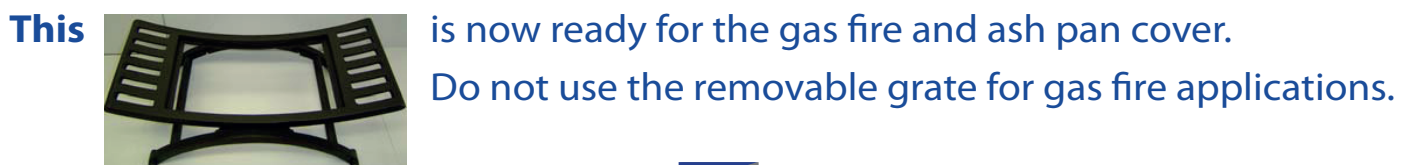
For Gas Fire Applications



Do this on both sides of the legs. Due to the casting process you may find that one of the plates fits one side better than the other.



Do not tighten the screws until every screw has been located in place.



PERCYDOUGHTY



01204 868 550



01204 868 551



sales@percydoughty.com

www.percydoughty.com

